

The Estate Agent People Recommend



Glen Cottage Bath Road,  
Littlewick Green  
SL6 3QR

**£299,950**



Wentworth Estate Agents have pleasure in offering to the market this charming ONE BEDROOM TERRACED HOUSE with NO ONWARD CHAIN. Located on the edge of the picturesque villages of Littlewick Green and Burchetts Green only 3 miles from Maidenhead.

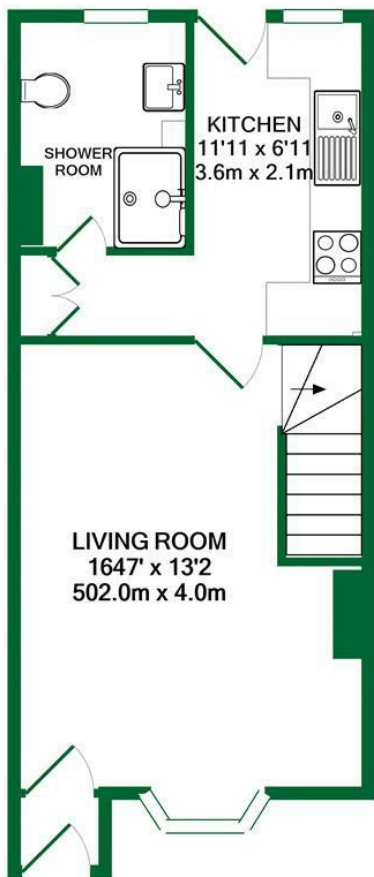
The property is convenient for the M4, and M40 motorways. Maidenhead is only 3.9 miles away with a mainline train station, serving London Padding (Cross rail due in 2021) and Reading.

Ground floor accommodation comprises of living room with electric fire, bathroom with WC, wash hand basin and shower, kitchen with eye and base level units, electric hob and single oven with access to the paved garden.

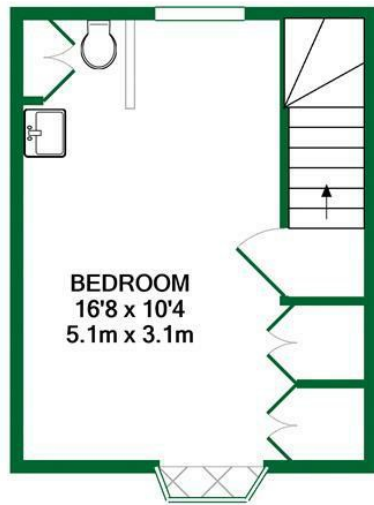
First floor accommodation comprises of double bedroom with fitted wardrobes and a standalone WC and wash hand basin.

Further benefits include private enclosed garden, electric heating, accessed on a private road, scope to re-furbish throughout and NO ONWARD CHAIN.

EPC - E



GROUND FLOOR



1ST FLOOR

TOTAL APPROX. FLOOR AREA 603 SQ.FT. (56.0 SQ.M.)

Whilst every attempt has been made to ensure the accuracy of the floor plan contained here, measurements of doors, windows, rooms and any other items are approximate and no responsibility is taken for any error, omission, or mis-statement. This plan is for illustrative purposes only and should be used as such by any prospective purchaser. The services, systems and appliances shown have not been tested and no guarantee as to their operability or efficiency can be given  
Made with Metropix ©2020

## ACCOMMODATION

- ONE BEDROOM CHARMING TERRACED HOUSE
- GOOD SIZE LIVING ROOM
- KITCHEN
- BATHROOM
- ENCLOSED PAVED GARDEN
- DOUBLE BEDROOM WITH WC AND WASH HAND BASIN
- OPPORTUNITY TO MODERNISE
- NO ONWARD CHAIN

